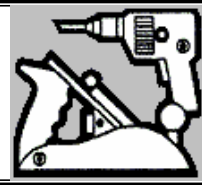


Waverley Woodworkers Inc.

Newsletter June 2005

Volume 12 Issue 5



Clubrooms: 2 Windsor Ave.,

Mount Waverley, Vic 3149. Telephone: 9807 9648

Website: www.waverleywoodworkers.org.au E-mail: petersta@melbpc.org.au

Office bearers 2004/2005

President Geoff Allen	9568 4380	Vice President Gavin Betts	9807 4661
Secretary Lynne Fitzsimmons	9884 4810	Treasurer Tom Phillips	9802 7821
Member Wolfgang Becker	9560 9278	Member Cameron McKerral	9885 5525
Member Tony McLachlan	9840 7716	Member Laurie Stuart	9807 9793
Public Officer Laurie Stuart	9807 9793	Newsletter Peter Stacey	9572 3090

Our intrepid president has returned.

PRESIDENT'S REPORT

Namaste!

Sorry, but I came back. Nepal is a beautiful country, beautiful, friendly, helpful people, but poverty like you wouldn't believe. 20% of children die before the age of 5! Luckily we can sleep comfortably in the knowledge that the Australian Government has budgeted \$6.4 million dollars in aid for Nepal this year.

Many thanks to Peter Stacey for filling Peter Hughes shoes while he takes a well earned rest.

If you have been at the club, you might have noticed that our former table saw has been sold. Phew! On another bright note, the Monash City Council have kindly renewed our grant which has been duly banked, ready for the next committee to spend it after the next AGM.

The committee have examined the entrails of the club's finances, (thanks Tom) and have decided to keep the membership fees at the current level for another 12 months. At this stage, no major additional costs are apparent on the horizon.

We are still concerned that not all our members seem to appreciate that the club equipment is for cutting wood, not nails, bolts, dirt etc. If we look at the various machines as being cabinet making machinery rather than knockdown tools, the blades will stay sharper and be safer to use. To this end, we are going to purchase a small circular saw which can be used on a sawhorse outside, for cutting up old fence posts etc. **It will still be necessary to check for nails, bolts etc. with the onus on the user to reimburse the club for any replacement / repair costs, if you are unlucky enough to hit something in your recycled timber.** Using the bandsaws, table saw or the docking saw for creating firewood will of course invite censure by the committee.

Club Night 11th May at 7:30 pm.

Well if you weren't there you may well have missed the best yet. Robert Hart kept us all entertained with his stories about life, kite making and flying. With a keen wit and energy to burn which belied his years, Robert was able to get most of us to start dreaming about flying them and teaching youngsters to do the same. Then he took us out the front and proceeded to fly a kite over the railway station parking lot, while standing in the middle of the road, when there didn't seem to be the slightest breeze. Robert made it spiral clockwise and then anti clockwise on command. Awesome. We each got to go home with kites and an invisible dog lead.

Show and tell included a Native Willow bowl by Bob Morrison finished with EEE and Glow. Alex Morey brought along a table lamp made from segmented timber. John Pogner showed us an Oak carving taken from a church in Halifax which apparently dated back to 1634. Van Gogh was with us in spirit as well in the form of a chair and box of bits that Tom Phillips had made as a result of the older master's painting.



Club Night 8th June at 7.30 pm.

Geoff Allen will give a talk on how he designed and made the Chess set which was entered and displayed at the "Create from a Crate" competition.

We are also inviting members to take part in another "Tool Swap" compare / buy or sell, whatever. So bring along any tools that may be surplus to your needs, It may turn out that someone else has been looking for just that item, and is happy to do a trade.

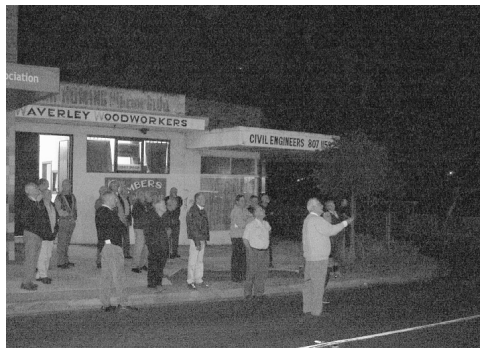
Its time to pay your dues again. Yes, \$75 payable on 1st July. We give current members a month's grace but then we might turn nasty. Just think what would you do if you couldn't come into the clubrooms to work or play? What would you read if you didn't get the newsletter? Also, the sooner you pay the sooner the next committee knows how much money they have to spend on your pleasure.

It's also time to consider joining the committee. You don't need an agenda, just a desire to be part of the group who helps the club to achieve its goals. If you can spare 11 nights of meetings a year and hopefully share in some of the clubroom supervision, then talk to me please.

You need to get your nomination in by 5:30pm on 8 July, 2005.

Annual General Meeting. Prior notice is given that the AGM will take place at 7:30pm 13 July 2005 prior to normal monthly meeting.

Geoff Allen



Is it a bird, is it a plane? No, it's Robert Hart's kite over the station car park.

Please Note: the closing date for input to the July 2005 Newsletter is 24th June, 2005

JUST TURNING

Monday 25th April. Two members present.

As this was a public holiday, only two members came. Therefore it has been unanimously decided, there will be no Turning meetings in future on a Monday, if it is a Public Holiday weekend.

Monday 2nd of MAY. Seven members present.

Alex Morey brought along a laminated vase/urn which is very attractive and has pewter embellishment in the centre. This was made in one day, is of hardwood with stripes of Jarrah.

Roger Pywell brought along depth sticks for planting bulbs. These were made from old legs (?) (I hope the legless one has received some replacements). Roger also showed many pens of different timbers and stick pens for nig attachments. Finally, Roger showed coasters with china painted inserts.

Bob Morrison brought along his Kaleidoscope finished with two outside wheels with glass inserts between. This 'scope was on a nicely shaped stand. The Mango platter with laminated centre star that Bob had shown partially finished was shown complete. These articles were for the Peninsula Woodturning Competition which ended on 22nd of May.

Ron Jones brought along a bowl of Norfolk Island Pine which was finished with four coats of Danish Oil.

Monday 9th of May. Eight members present.

Phil Dunstan brought along several turnings which he had turned wet and then placed in a plastic bag of wet shavings. As a consequence, they were covered in mould and he wanted advice as to the best remedy for this. Suggestions were: - Use bleach such as White King, micro waving and sanding. Next time, open the plastic bag every couple of days, to reduce the humidity in the bag which was the cause of the mould growth.

Bob Lorensen brought along two pieces of ebony which came from a teledex and will now be recycled. Bob also told us about Newcastle's Woodwork Club who sent a leaflet about their club. This club's members made Bob very welcome and he recommends any member travelling north to visit the club, who hold their sessions at the Craft Centre, at Newcastle Showgrounds, NSW.

Alex Morey brought along a lovely 'Lazy Suzan' of hardwood, with a tile insert in the centre and a segmented Jarrah and hardwood edge. Finish was Ruskin's two part plastic finish. (Refer page 9 for a picture).

Monday 16th May. Nine members present.

Phil Dunstan showed a 20 year old piece of W.A. Grass Tree which he turned into a small table lamp base. Finished with Shellawax. Phil also showed a small bowl finished with EEE and Shellawax. Also, not to waste anything, Phil used a small off-cut of Jarrah which lent itself to be small sailing ship with the addition of a calico sail.

Bob Morrison told us about the judging of the entries for the Peninsula Woodturning Exhibition which was carried out today by Vic Wood and Guilio Marcolongo. Our congratulations to Bob, for achieving at least two first prizes.

Ron Jones brought along a Pine table lamp beautifully finished.

Peter Stacey brought along Helene's four pieces of Oak, (from a pallet) which he volunteered to drill a centre hole, for the standard lamp Helene is making. Unfortunately Peter had some problems drilling the timber and finished up with the 'drill bit' coming off the shaft and stuck in the bore. Fortunately the bit was near the end of the last piece of timber and it was possible to cut this off without (?) ruining the design. The base is made from timber purchased in Tasmania as Horizontal, but the members present suggested that it was not the case, but could not identify it conclusively.

Monday 23rd May. Eight members present.

Peter Stacey brought along a jig to drill holes for pen blanks.

Bob Lorensene brought along three pens, two of Purple Heart with golf club clips and one She Oak with a fishing rod and fish clip.

Ron Jones brought along a wick lamp with a Yew base. Aromatherapy oil can be put in the well to scent the air when the wick is lit. Ron also brought along 2 segmented pens which he will enter into the show at Nunawading.

Phil Dunstan brought along gemstone spheres. Phil turned bases of rhododendron (2) and one of pine to display the spheres.

Alex Morey brought along a segmented dish of Camphor Laurel and Queensland Kauri. Alex said this was a simple design for a beginner to do.
Helene Longton.

CARVING

Carve – In 2005

The 9th Carve-In was held 13th – 15th May at Lady Northcote Recreation Camp, Rowsley via Bacchus Marsh. Bryan Thompson organizes this event which is held each year the weekend following Mother's Day. There were 48 "woodies" at the 2005 show and they went into groups for spoon carving, relief carving, mechanical (angle grinding), carving in-the-round (elephants, busts and possums) and furniture carving. Next year's weekend will have caricature faces added.

The event can cater for 60 and included accommodation, meals and tuition for \$105.00. Application forms will be posted in November for next year's event. Spouses/ partners (non-carvers) can also attend; they can visit Bacchus Marsh, read, walk etc. Bryan Thompson considers the Carve - In as a Club and we are all members. I hope to finish carving my Australian Cedar Elephant, in Bryan Parkinson's Monday afternoon lessons.

Whilst away, I learnt that Jeff Aizen, one of our members and a regular at the Carve-in, has had to have part of his lung removed and is having on-going treatment. We wish him speedily improved health.
Helene Longton.

Notices and Reminders:

17th to 19th June. The Australian Woodturning Exhibition is held at the Waratah Room, Whitehorse Centre, 397 Whitehorse Rd. Nunawading. (Melways 48 G9). Opens at 10am each day.

Monday 19th September. Ken Cort will be demonstrating tool sharpening and long hole boring at Knox and District Woodworkers from 9am.-3pm. Depending on numbers attending, a small charge will be made for lunch and morning tea. Ken will also be demonstrating at the "Working with Wood Show".

The Woodturning SIG. (Special Interest Group). As in previous years, during July and August will meet only on the 1st and the 3rd Mondays of the month, at 7:30 pm.

Pen kits are available at the club for \$2.50 each or \$12.50 for five.

Turning Lessons. The current session has ended and Bob Morrison will start the next training session as soon as he has four students. The course lasts for six weeks, three hours per week and will include 'inside out' turning.

E-mail addresses for Newsletter distribution, have been very slow in arriving. Here is a chance for us to help reduce club costs, without it adding to our costs.

Special Note: Club subscriptions are now due for the 2005 – 2006 period.

Please pay your subscription by 1st July 2005.

WOODWORKING TIPS from "FINE WOODWORKING"

(Published with the express permission of Taunton Press, publishers of "Fine Woodworking". Such permission is restricted to Waverley Woodworkers Inc.) From the pages of [Fine Woodworking Magazine](#)

Steel Wool vs. Abrasive Pads. (Part 2 continued from the May Newsletter)

Even with the advent of synthetics, there still is a place for old-fashioned steel wool
by Jeff Jewitt.

Steel wool is better for achieving a satin finish

You get a better surface by rubbing out the final coat with steel wool than with an abrasive pad. The steel wool tends to cut the surface of the finish, while pads tend to tear it.

Once the finish has cured, sand the surface with 600- or 800-grit sandpaper to shear off any dust pimples and to level brush marks and drips. Then use 0000 steel wool wrapped around a softwood or cork block, to produce a hand-rubbed, satin finish. If you use a pad of steel wool, unravel it and wrap it around the block. If you use a roll, cut off enough that can wrap the block several times.



Use a white pad for rubbing out. Rubbing the pumice with a white pad is less likely to form clumps than rubbing with a damp cloth. Spray the surface with soapy water, shake the pumice evenly onto it (left) and rub away (right).

Squirt the surface with soapy water (a capful of dishwashing detergent per quart of water) or diluted Murphy Oil Soap, or use a lubricant designed for use with steel wool, such as Wool-Lube. Rub the block around the perimeter first, then do the centre section with long, straight strokes, keeping the pressure uniform and your strokes parallel to the grain.



To remove rust from a tool bed, apply paste wax, splash on some mineral spirits (left) and then rub away with abrasive pads in successive grits (right).

You can use a white abrasive pad for a slight de-glossing of a finish. For increased abrasiveness, use the pad with pumice and rottenstone. This method will leave a glossier surface than one produced using 0000 steel wool. I prefer a pad to a felt block because it holds the abrasive better and doesn't allow clumping.

For rejuvenating an old finish and polishing metal, steel wool has the edge

Steel wool has several advantages over abrasive pads when it comes to cleaning and polishing wood or metal. One is its ability to hold a liquid. Second, unlike a pad, it conforms to tight contours. Recently introduced abrasive pads show improved ability to mould to contours, but steel wool still is superior. There's no better way to revive an old finish without stripping it than to use steel wool to clean and then wax it. The gentle action of 0000 steel wool removes grime without cutting through thin finishes.

First, unravel a 0000 steel-wool pad and squirt some naphtha on the surface of the metal (about an ounce). Then rub the surface gently with the steel wool. Periodically, stop and wipe the residue with a clean cloth. This method quickly cuts through oil-based dirt and grime. When the surface is both clean and smooth, you can use a new piece of 0000 steel wool to apply a coat of paste wax.

For removing light rust on cast-iron machine tops, abrasive pads are handy on these flat surfaces. The grade you begin with depends on the severity of the rust, but apply some wax to the pad and some mineral spirits to the tabletop and rub away. Gradually move up to finer pads until the lustre of the damaged area matches the rest of the surface.



Jewitt prefers to use an abrasive pad for large, flat surfaces (left). To lessen the risk of cutting through the finish, he uses short, controlled strokes near the edges. Steel wool's ability to scrunch down makes it ideal for smoothing complex shapes.



Use steel wool for a satin finish. The scratch pattern left by a grey abrasive pad on the top is more aggressive and uneven than that left by 0000 steel wool.

Jeff Jewitt is a furniture finisher and restorer in Cleveland, Ohio. He is the author of [Great Wood Finishes](#) and [Hand-Applied Finishes](#). Photos, except where noted: Mark Schofield.

WODWORKING TIPS

FROM "WOODSMITH"

Copyright of August Home Publishing Co. Publishers of the "Woodsmith", "Shopnotes" and Workbench" magazines, all worth a read. Used by Waverley Woodworkers Inc. by permission)

Paint Can Lid Whenever I use a can of paint or finish, the liquid always runs from my brush into the groove around the rim of the can, making a mess when I replace the lid. To prevent this from happening, I cut a "donut" out of 1/4" hardboard and simply taped it down to the top of the can.

The donut provides a convenient place to wipe off the excess finish from my brush and also keeps the finish out of the groove of the can.

Countersink Tip

With most drawers, I don't need to worry about adding the pulls until after the pieces are glued together. But with some small drawers this can get you into trouble. The pilot holes aren't the problem — they can be drilled from the front. But when the mounting screw needs to be countersunk, the drill is often too big to fit inside the drawer. Fortunately, there's a quick solution.

First reverse the countersink cutter on the end of the drill bit, as shown in the photo. Then insert the bit through the pilot hole and chuck it in the drill. Now to countersink the hole, all you have to do is reverse the direction of the drill and gently pull back on the bit.



Alex Morey's 'Lazy Suzan' of hardwood, with a tile insert and a segmented Jarrah and hardwood edge



Discounts Available from the following:

The following companies offer discounts to members of the Waverley Woodworkers.

Note: Discounts are only available on presentation of your current membership card.

Australian Wood Panels , 40-42 Winton Rd., Clayton	9543 5033
Baileys Toolbank , Unit 4 Rowen Ct. Box Hill	9897 1911
Blackwoods , 31 Fowler Rd., Dandenong (ask for Cyril)	9518 2222
Gus-Tec , 521 Mountain Highway, Bayswater (Note name change)	9427 8444
Note: New address: Opposite the end of Mountain Highway	
Dixon's Hardware , 304 Stephenson Rd., Mount Waverley	9888 1813
Flatman's Timber & Hardware , High Street Road, Syndal	9802 9211
A. Lewis & Co. , 302 Jasper Rd., Ormond	9578 6218
Malvern Paint & Timber Finishes , 1933 Malvern Rd., Malvern East	9885 2883
Magnetic Abrasives , 286 Neerim Rd., Carnegie	9571 6811
Mathews Timbers , 125 Rooks Rd., Vermont	9874 1666
Moorabbin Timber , 230 Wickham Rd., Moorabbin	9553 0155
Sachy's Industries , 43 Browning Drive, Glen Waverley	9803 2370
Shiver me Timbers , 217 Kororoit Creek Rd. Williamstown	9397 5993
Woodworking Warehouse , 11 Citrus St. Braeside	9587 3999

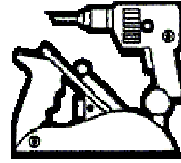
If you know of any other source of discounts for members, or if you have difficulty obtaining a discount from any of the above, during Peter Hughes absence, please contact Peter Stacey, on ph **9572 3090**, or by e-mail petersta@melbpc.org.au

COPYRIGHT: Except where otherwise stated, other woodworking clubs may use items from our Newsletter. We do ask that such be without alterations, and that the source be acknowledged.

Waverley Woodworkers Inc.

Clubrooms: 2 Windsor Ave.,

Mount Waverley, Vic 3149 Telephone: 9807 9648



Workshop Opening Times

Day Times

Monday	Open <u>only Public Holidays</u> for general woodwork.
Tuesday	9 am – 4 pm.
Wednesday	9 am – 12 noon.
Thursday	Closed
Friday	9 am – 12 noon.
Saturday	9 am – 12 noon December - February. 9 am – 4 pm (March - November).
Sunday	Closed

Special Interest Groups' Meeting Times

Monday	9 am – 12 noon - Assisted Woodwork Allocated Basis (Except on Public Holidays).
Monday	1:30 pm - 4:30 pm – Carving.
Monday	7:30 pm – 9 pm – Wood Turning. (Only 1st & 3rd Mondays in July & August).
Club Night	2nd Wednesday of the month 7:30 pm – 9 pm.