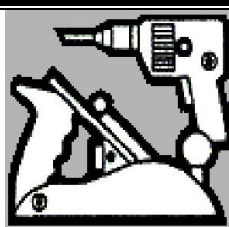


Waverley Woodworkers Inc.

Newsletter March 2009

Volume 17 Issue 3



Clubrooms: 2 Windsor Ave.,
Mount Waverley, Vic 3149

Telephone: 9807 9648

Website:

www.waverleywoodworkers.org.au



CITY OF
MONASH

Supported by

Office Bearers 2008 - 2009

Executive

President: Helene
Longton: 9579 4829

Vice President: Geoff
Allen: 9568 4380

Treasurer: Phillip
Dunstan: 9808 7510

Secretary: Tony
McLachlan: 9840 7716

Auditor: Ian Trivett: 9802
5110

Public Officer: Laurie
Stuart: 9807 9793

Website Manager:
Cameron McKerral:
9885 5525

Committee & Sub Comm. Members

Wolfgang Becker: 9560
9278

Bruce Hartland: 9560 5708
Roberto van der Hock:
9551 6242

Mary Mosca: 9806 0165

PRESIDENT'S REPORT

The Club has been busy with new members joining and feeling their way. We are all here to assist each other, so ask when in doubt.

New Shed This is almost ready to have shelves fitted and will house toys made and in the making as well as projects in progress. However, members are encouraged to take their works in progress home when they cannot work on them regularly to complete same. Thanks to Roberto Van der Hock and Lewis Coleiro for their work on the new shed.

Information Sheet. There is an information sheet enclosed in this newsletter to inform members of issues, clarify procedures etc., for both new and old members.

Enjoy your woodworking activities and club and keep safe.

Helene Longton.

CLAYTON FESTIVAL . This was held on Sunday 22 March. Thanks to members who supplied articles for sale and display. Thanks also to Roberto Van der Hock and Hans Kopp for help in manning the display.

OAKLEIGH FESTIVAL This will be held at Warrawee Park, Drummond St. and Atherton Road on Sunday 15 March when our Club will again man a stand. Articles for

sale and display will be welcomed, as is help from any members. Do not leave it to others to help, get in and give some help yourself.

CLAYTON LIBRARY . A reminder, we have this display cabinet at the Library for the month of April to show what members can do and make. Please advise of any items you have to show and or sell. Library takes a commission, has no input in sales and no responsibility for safety of items, and though cabinet is kept locked for the month.

MARCH CLUB NIGHT Our member, John McGarry will be our speaker and demonstrator on Wednesday, 11 march at 7:30 pm. John's subject will be the use of various jigs he has made to facilitate ways to obtain particular results, eg. Corner contrasts on boxes etc.

TURNING SPECIAL INTEREST GROUP . The group continues to meet at the Club each Monday evening at 7:30 pm. Showing our work, commenting on same, sharing ideas and timber for projects. All welcome. Details of each of these nights won't be put into the newsletter to allow, hints and other material for members interest.

TOY MAKING GROUP is speeding ahead with their efforts on Tuesdays from 1:00 to 4:00 pm. Come and join the group to make toys etc. to be distributed to disadvantaged children at Christmas and other times. Again do not leave it all to others, get involved yourself.

CARVING GROUP Continues on Mondays from 1:00 to 4:00 pm. Come along and try out this art, you might be surprised at the result.

NEWSLETTER CONTENT . Please feel free to submit articles, hints, queries, etc, which may be of interest to Club members. Send them to Peter Hughes (9038 8602) or email: phug8047@bigpond.net.au, before the end of each month for inclusion in the following newsletter. Some editorial license may be exercised over any material submitted.

MISSING EQUIPMENT . A brown handled turning chisel is missing from the racks. Please check your tools in case it has been caught up with your chisels.

ALSO whoever has borrowed the "Howard Silvers" and "Hafale" catalogues, please return them to the clubrooms. Then all members will be able to refer to them.

FEBRUARY CLUB NIGHT

Carl Lutz showed the use of Carba-Tec's Dovetail machine. It is very versatile and members were very interested in the demonstration. Quite a few members are in the process of making small chests of drawers. Carl showed a sliding dovetail as well as through dovetailing (14° to 18° on sliding dovetail) the machine retails for approx. \$300. Carl also advised that experience has shown that the Yellow Glue is superior to the white glue which is near 80% water.

Show & Tell: Ray French had 2 interesting cheese boards with contrasting timber dovetailing at each end.

Bob Morrison showed a Huon Pine vessel held with silver pins suspended between twin angled Myrtle (painted black) finely shaped supports. Bob's 3 lidded boxes were the size of a fingernail!

Phil Dunstan showed a Pepper Grinder and a tall vase finished with polyurethane.

Nick Edquist showed a small Jarrah Tea Caddy with hand cut dovetails and a sliding lid.

TIPS FOR TURNERS

1. When sanding an article on the lathe, use a piece of soft leather on your finger will decrease the heat.
2. Before putting polish on the work whilst on the lathe, inspect with a strong light to check if there are any scratches or lines on the work piece. Maybe a torch will help. It is best found before removing the work piece from the lathe.

Bob Lorensene

WET WOOD

[Water](#) occurs in living wood in three conditions, namely: (1) in the [cell walls](#), (2) in the [protoplasmic](#) contents of the [cells](#), and (3) as free water in the cell cavities and spaces. In heartwood it occurs only in the first and last forms. Wood that is thoroughly air-dried retains from 8-16% of water in the cell walls, and none, or practically none, in the other forms. Even oven-dried wood retains a small percentage of moisture, but for all except chemical purposes, may be considered absolutely dry.

The general effect of the water content upon the wood substance is to render it softer and more pliable. A similar effect of common observation is in the softening action of water on paper or [cloth](#). Within certain limits, the greater the water content, the greater its softening effect.

Drying produces a decided increase in the strength of wood, particularly in small specimens. An extreme example is the case of a completely dry [spruce](#) block 5 cm in section, which will sustain a permanent load four times as great as that which a green (undried) block of the same size will support.

The greatest increase due to drying is in the ultimate crushing strength, and strength at [elastic limit](#) in endwise compression; these are followed by the modulus of rupture, and stress at elastic limit in cross-bending, while the [modulus of elasticity](#) is least affected.



WHY THE HELL AM I DOING THIS?

In 1999 Ian (**ROBBO**) Robertson of Cob & Co Woodturning got himself a big job to do for the University of Sydney (*New South Wales, Australia*). It consisted of a number of very large turned posts, the largest being 8.9 metres long x 300mm diam and weighed a little over 1 tonne. The order consisted of 16 of these large posts, 16 x 6 metres 16 x 4 metres & 16 x 2 metres.

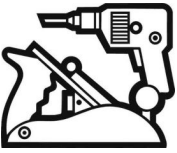
Robbo's specially built, heavy duty, 13 metre long lathe, which he had recently constructed was about to be christened. The photo's on these pages give you a brief glimpse at the largest of the pieces and some of the statistics involved in turning them.



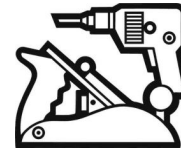
OH! WHAT A BEAUTY!

Note the gantry suspended from the roof above the lathe.

This is the only way the 8.9 metre posts can be moved into and out of the lathe. The almost 1 tonne lump of West Australian Jarrah is loaded onto the lathe using a couple of 20 ton block and tackles that are suspended from the overhead gantry.



Waverley Woodworkers Inc
2 Windsor Avenue
Mount Waverley, VIC, 3149
www.waverleywoodworkers.org.au
Ph. 9807-9648
ABN 458 367 522 81



Information Sheet

This information sheet will be issued from time to time to clarify procedures and events for new and old members

Opening times

Mondays

9.00 am – 12 noon

Special Interest Group for ladies. (This group is full at the present)

1.00 pm – 4.00 pm

Carving Special Interest Group – any members interested in carving are invited to come along

7.30 pm – 9.00 pm

Turning Group – members interested in turning meet to talk about techniques and show the latest projects. Any member is welcome.

Monday holidays

Often open for general woodworking – need to check for this.

Tuesdays

9.00 am – 12 noon

General woodworking for all

1.00 pm – 4.00 pm

Toy making group. Those interested in making toys are welcome to come along at this time.

Wednesday

9.00 am – 12 noon

General woodworking for all

1.00 pm – 4.00 pm

This session caters for those who need instructions on safe use of machines and help to get started on personal projects.

Thursday

Closed at present

However, if any member needs to use the club this day and a key holder is available, the club may be open.

Friday

9.00 am - noon

General woodworking for all and it may be possible to go on longer if a key holder is staying on.

Saturday

9.00 am – 4.00 pm

Club is open for general woodworking from the first Saturday in March to the last Saturday in November. However, during the summer months of December – February the hours are reduced to 9.00 – 1.00 pm unless a key holder is staying on.

Safety procedures

The safety procedures need to be read and followed before using the club machines. These instructions are designed to outline safe operations of the machines as well as to list some activities that are inappropriate and forbidden on the machines. It is a requirement that you confirm that you have read and agree with the safety instructions by signing the register held at the club. It is held next to the attendance book at the club.

The committee is currently reviewing these procedures as required by the partnership agreement with the City of Monash. It may be that new procedures and documentation may be necessary in the future

Dust Control measures

Weather permitting, sanding by the use of orbital and belt sanders should be done outside the building near the shed. Clamps and stands are available for the workpiece.

Items for sale in the club

The club buys in bulk certain items for the convenience of club members. These purchases are cheaper and more convenient than buying from shops. Items currently include wood biscuits, dowels, sandpaper, linseed oil, wood glue (yellow). For liquids it will be necessary for members to supply their ½ or 1 litre containers. These purchases are recorded in a book and monies deposited in the “Ned Kelly” box.

Timber and other Supplies

Timber is available from the outside shed for the price of a gold coin donation. It is expected that members would increase their donation accordingly for pieces of wood of significant value. There are also some supplies of paint, veneers, and screws for personal use. Again a gold coin donation is required and more for significant quantities. We rely on the honesty of members to “cough up” for the benefit of all club members.

Workshop etiquette

- The **back door** must be closed when the thicknesser is being used – to minimize noise for our neighbours.
- **Tools** and set up of work must not be put on machinery tables eg keep the drop saw bench free.
- **Clean up** your sawdust and return the machine to its usual position after your use.
- **Dust collection bags** on the orbital sanders, drop saw and biscuit cutter, should be examined after use and emptied if becoming full.
- If other members are waiting, generally the **maximum time** for use of a particular machine is 30 minutes.

Borrowing Equipment

The only equipment that is permitted to be borrowed from the club are clamps. The items should be entered in the book at the entrance desk as well as the date taken. The clamps should be returned the next day that the club is open and the book signed off.

Work bench Usage

If possible, share work benches and save space – by keeping items and material that are not being used beneath the bench.

Name badges Should be worn at the club and are kept on the right of the door entry, but may be taken home if you wish. These are replaced every year to show the current financial year

Phone Calls The cost for a call is 50c – with monies deposited in the telephone box

Tea/Coffee & biscuits The cost is 50c – with money deposited in wooden bowl provided

Magazines – can be borrowed (and of course returned) from the office

Lost property. There are some jackets in the office. If not claimed within a reasonable time, they will be donated to the Salvos.

Club nights are held on the second Wednesday of the month at 7.30 pm. The committee welcomes suggestions for speakers for club nights so if any member knows of a suitable speaker, tell Helene

General comment

Members have a love of timber, woodworking techniques and items that can be made from this lovely resource. So let us enjoy our pastime, and help each other when we can.

Learn to make a TODDLERS Chair or a Stool for your Workshop

Both projects will be made with pine, Tassie oak and scrap pieces of red gum to add interest. The tools that you will learn to use are. Thicknesser, table saw, drop saw, drill press, horizontal drill press, sander and router.

Workshop Stool

Approximate height of the stool is 55cm, but you can make it any height that you want.

Contact Ray Ffrench if you are interested on 9889-1155 if you are interested in making either of these I will be pleased to run a workshop over 3 or 4 sessions for \$60 per person. This includes all timber (estimated \$15-20) with all the remaining money going to the club. Minimum number of 4 required. Probably on a Thursday, either afternoons or early evening. Starting in April.



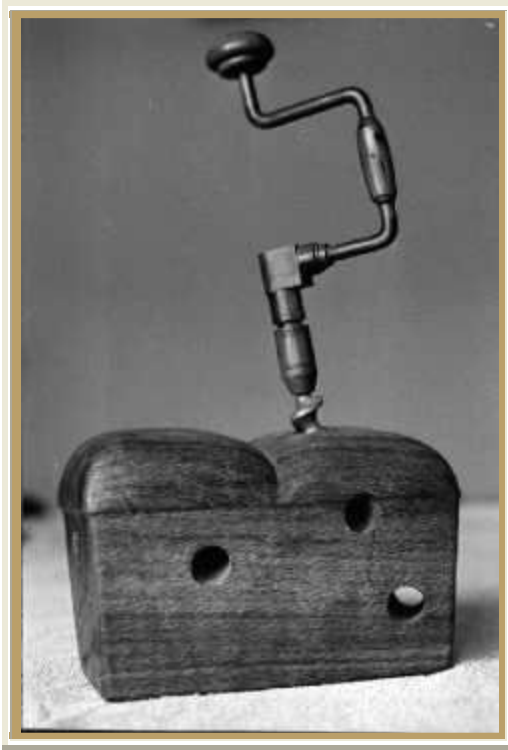
Approximate height of the stool is 55cm, but you can make it any height that you want.

Contact Ray Ffrench if you are interested on 9889-1155 If you are interested in making either of these I will be pleased to run a workshop over 3 or 4 sessions for \$60 per person. This includes all timber (estimated \$15-20) with all the remaining money going to the club. Minimum number of 4 required. Probably on a Thursday, either afternoons or early evening. Starting in April.

Toddlers Chair. This is ideal for toddlers 2-5 who want to sit at the table but do not want to sit in a high chair. The seat is 50cm from the floor. The chair is very stable and designed to be climbed on.



THE BREAD ~~BOARD~~ BORED



A number of years ago the Victorian Woodworkers Association had a Christmas competition to make a bread board. First prize was a bottle of plonk or something similar.

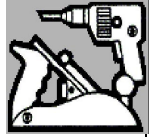
Kevin decided to be a little frivolous and made a wooden loaf of bread then a wooden brace and bit and thus was born The Bread Bored.

Unfortunately the club didn't do frivolous and Kev didn't win the bottle of plonk.

Waverley Woodworkers Inc.

Clubrooms: 2 Windsor Ave., Mount Waverley, Vic 3149

Telephone: 9807 9648



Workshop Opening Times

General woodwork

Monday (only on public holidays)	9 am – 12 noon 1 pm - 4 pm
Tuesday	9 am – 4 pm
Wednesday	9 am – 12 noon
Thursday	Closed
Friday	9 am – 12 noon
Saturday	9 am – 12 noon Dec. to February 9 am – 4 pm March to November
Sunday	Closed

Special interest groups

Monday: Assisted Woodwork	9 am to 12 pm
Monday: Toy Group SIG	(except public holidays)
Monday: Woodturning SIG	7:30 pm to 9:00 pm
Monday: Wood Turning	7:30 pm – 9 pm
Wednesday: Assisted Woodwork	1:30 – 4:30
Club Night: 2nd Wed. of the month	7:30 pm – 9 pm

If not delivered, please return to:
Waverley Woodworkers Inc.
2 Windsor Ave
Mount Waverley, Vic 3150

