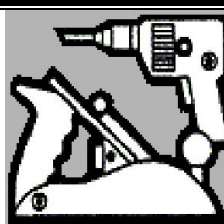


*Waverley Woodworkers Inc.*

**Newsletter November 2009**

**Volume 17 Issue 10**



**Clubrooms: 2 Windsor Ave.,  
Mount Waverley, Vic 3149**

*Telephone: 9807 9648*

**Website:**

[www.waverleywoodworkers.org.au](http://www.waverleywoodworkers.org.au)



**CITY OF  
MONASH**

Supported by

---

## **Executive**

**President:** Tom Phillips **Vice President:** Vacant

**Secretary:** Tony McLachlan 9840 7716 **Treasurer:** Phillip Dunstan 808 7510

**Public Officer:** Laurie Stuart 9807 9793

### **Committee & Sub Committee Members**

Wolfgang Becker 9560 9278 Roberto van der Hock 95516242 Mary Mosca 9806 0165

Hans Dieter Kopp 9807 9882 Cam Davies 9509 9214

**Auditor:** Ian Trivett **Newsletter Editor:** Peter Hughes 9038 8602

---

## **President's Report**

Within Waverley woodworkers Inc. we have a vibrant club of around 100 members, ably led over recent times by Helene with many dedicated members within the committee, special interest groups and project activities. I am thankful for the many offers of support and best able hope to return that support. At the same time I encourage any "non- aligned" members to make contribution to club activities in whatever way their time and talents allow; make the offer.

Keep chipping on.

Tom Phillips.

## **Club Night –October**

Bill Norquay - Sachys Robertson Screws (Aust.)

Bill Norquay, again a welcome guest of our club took us back in time to the origins of the screw (a screw is in fact a wedge) when the ancients used wooden screw devices to propel water uphill. Onward then to the industrial era and the development of the metal screw and the necessary material and manufacture that goes into making a quality item. The Canadian Robertson screw with its distinctive square drive head and various inventory items (including the "Insty-Bit taper plug cutter) were displayed with interested members buying various items.

Bill , a local resident ,was thanked by the members.

Show & Tell:

Bob Lorensene

3 sweet lolly Bowls for elderly people. Made from Blackwood, finished with EEE.

Hans Kopp

Miniature Chess boards, various lidded boxes from Redgum and Elm, all had different fitment of the lids.

Lids made from: Lemon sentence, Huon Pine, Birch. One had a Tigereye stone as inlay.

Russel Painter

Interesting small bowl with saucer on three turned legs. Wood came from a Redgum bridge in Euroa.

Helene Longton

Two pocket mirrors with Blackwood inlays. Both in hand-crafted pouches

## **Chadstone Fun Day** -Batesford Reserve Sunday 18<sup>th</sup> October

A wide range of community based groups (mainly Jordanville centric) participated on the day. Our club maintained a display stall with various items for sale ( thank you to those members who made offerings). Particular thanks to a troika of our members; **Roberto Van Der Hock, Hans-Dieter Kopp and Mary Mosca-** for their all round effort over from go to whoa. Well done you threesome. Other members lent their welcome support throughout the day.

## **Health & Safety**

The message in our October Newsletter “**Take Care, Be Aware, Be Safe**” was prescient. We had a fire in the table saw caused by a combination of a blunt blade cutting too slowly into heavy timber causing heat to ignite a build in small slivers in the ducting throat beneath the table and then on to the outer plastic ducting. Presence of mind by Helene (who else?) and new member Trevor (what a warm welcome to the club) quelled the fire. **Well done and thanks.**

## **Club Night 11November 2009** at 7:30 pm.

On this night Tony McLachlan (Club Secretary) will give a talk on:

“Experiences in Defence Science – Collins Class Submarines, and F/A -18 and F-111 Aircraft”

## **Club Annual Picnic** Saturday 28 November 12:00 noon till ?

To be held at the Brickmakers Park, Stamford Rd. Oakleigh East – Melways map 69, ref H6.

Please put your name on the list in the Office along with any family you will bring. Fee is \$5 for members, partners and family are free. Also indicate on the list if you will supply salads or sweets.

Meat will be provided by the Club. Bring your chairs and drinks please.

## **Hand Tool Preservation Association**

Is having a sale of a wide range of traditional and antique hand tools at:  
Glenferrie Primary School,  
80 Manningtree Rd., Hawthorn. (Melways 45 C11)  
On Sunday 8 November from 9:00 am to 1:00 pm.

## **Berwick District Woodworkers Club**

This club has issued an invitation to members to their Toy Gala Day to be held on Sunday 6 December, at the Old Cheese Factory Function Centre, from 2:00 pm.

The toys will be presented to local organisations for distribution to disadvantaged children at Christmas.

The toys will be on display prior to the handover.

Afternoon Tea will be available.

If you wish to attend please contact Eric Guthrie on 9702 1430 or Rick Hoare on 9702 2175 by 30 October. I am sure that a phone call in early November will be OK.

## **Wagga Wagga Turn About – March 12, 13, 14, 2010**

The cost of the weekend is \$176 (to be confirmed), which includes all meals and accommodation.

There is a limit of 100 people.

Contact: Larry Sloan

Keith Gates

27 Henwood Avenue

26 Dunne Avenue

Wagga Wagga 2650

Forest Hill 2651

0269 261536

0269 227380

Bookings with \$50 deposit close by 1 February, 2010

## **Vic Wood's Woodturning Workshops – Closing Down Sale of Wood & Tools**

Saturday & Sunday November 28 & 29, 2009

31 Wridgway Avenue, Burwood. 3125 9:00 am – 4:00 pm

Huge Discounts on over “1000” Round bowl Blanks – up to 50% off

Used Woodturning Tools ½ Price or less

Grinding Wheels, etc. Finishing Materials, Oils, Waxes etc up to 50% off

Some Woodturning Books and Magazines.

### **NO PRE-SELLING**

### **New Members**

We welcome the following new members who have joined Waverley Woodworkers in this new financial year.  
Happy woodworking.

Matthew Rushton; Russell Painter; Jenni Parker; Aaron Luck; Fujita Yuko;  
Gary Rios; Nicolas Haus; Trevor Brooks; Joanne Schmölzer; Mick Ryle; Ron Clarke.

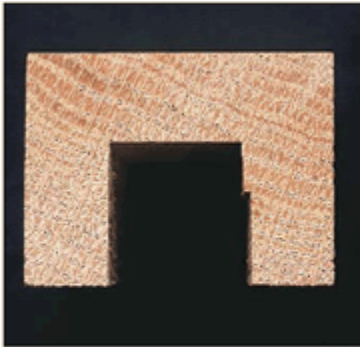
### **The Brevity of Wit:**

“I have kleptomania, but when it gets bad, I take something for it.”

“In just two days from now, tomorrow will be yesterday”

“A bartender is just a pharmacist with a limited inventory”

## Perfect Grooves and Dadoes on the Router Table.

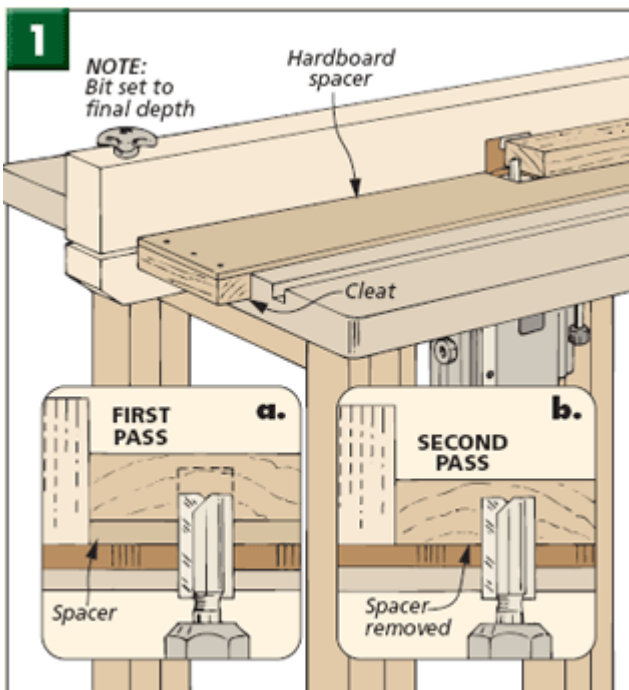


▲ After changing the height of a bit, some routers may leave a small step.

When routing a deep groove (or dado) on the router table, you'll get much smoother results by making a couple of shallow cuts. To do this in the conventional way, you simply raise the height of the bit between cuts. But here there's a catch. Adjusting the bit height often shifts its position enough to create a “stepped” cut (*photo at right*). So you end up trading a clean cut for an inaccurate groove.

But all is not lost. There's a simple trick you can use to get both a clean and accurate cut. The key is to avoid having to change the bit height between cuts. To do this, I set the bit to full height and then install a spacer over it, as shown in Figure 1. The  $\frac{1}{4}$ " hardboard spacer is held in place with a cleat at each end and can be added or removed in a snap.

You make the first, shallow cut using the spacer, and then slip it off for the second, full-depth cut. And the bonus is that you actually get the job done quicker.



## Timbers of Australia:

### **“African Walnut:**

Commercial names: Benin walnut, Nigerian walnut, Nigerian golden walnut, and Congowood.

It is from Tropical West Africa and the heartwood is bronze orange-brown, with gum lines causing black streaks or lines. The grain is interlocked, sometimes spiral, producing a striking ribbon striped figure on quartered surfaces. It has a moderately fine texture and is lustrous.

The wood dries fairly rapidly but requires care in seasoning.

Works well with both hand and machine tools with only a slight blunting of edges.

Extensively used for furniture and cabinet making, gun stocks and rifle butts. Slices into very attractive face veneers.

**This space left clear for your comments on “Favourite Power Tools” (see October Newsletter) or any other good input you may have.**

### **Discounts are available from the following:**

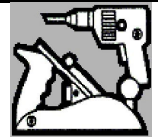
**Note:** Discounts are only available on presentation of your current membership card.

<b>Australian Wood Panels</b> , 40-42 Winton Rd., Clayton.	9543 5033	
<b>Baileys Toolbank</b> , Unit 4 Rowen Crt. Box Hill.	9897 1911	
<b>Blackwoods</b> , 31 Fowler Rd., Dandenong	9518 2222	
<b>The Delta Group</b> Shed 2, 577 Plummer St. Port Melbourne	1300 887 558	
<b>Flatman's Timber &amp; Hardware</b> , High Street Road. Sydal. ***	9802 9211 ****	
<b>A. Lewis &amp; Co</b> , 302 Jasper Rd., Ormond.	9578 6218	
<b>Malvern Paint &amp; Timber Finishes</b> , 1933 Malvern Rd., Malvern East	9885 2883	
<b>Magnetic Abrasives, Now Known as “Abrasiflex” and are located at 14 Bastow Place, Mulgrave</b>		<b>9562 1788</b>
<b>Mathews Timbers</b> , 125 Rooks Rd., Vermont.	9874 1666	
<b>Moorabbin Timber</b> , 230 Wickham Rd., Moorabbin.	9553 0155	
<b>Sachy's Industries</b> , 43 Browning Drive, Glen Waverley.	9803 2370	
<b>Shiver me Timbers</b> , 217 Kororoit Creek Rd. Williamstown.	9397 5993	
<b>Woodworking Warehouse</b> , 11 Citrus St. Braeside.	9587 3999	

# Waverley Woodworkers Inc.

Clubrooms: 2 Windsor Ave., Mount Waverley, Vic 3149

Telephone: 9807 9648



## Workshop Opening Times

### General Woodwork

Monday (only on public holidays)	9 am – 12:00 pm
Tuesday	9 am – 12:30 pm
Wednesday	9 am – 12:30 pm
Thursday	Closed
Friday	9 am – 12:30 pm
Saturday	9 am – 12:30 pm
	Dec. to February
	9 am – 4:00 pm
	March - November
Sunday	Closed

### Special Interest Groups

Monday: Assisted Woodwork	9 am – 12 pm (except public holidays)
Monday: Woodturning SIG	7:30 – 9:00 pm
Tuesday: Toy SIG	1 pm – 4:00pm
Wednesday: Assisted Woodwork	1:30 – 4:30 pm
Monthly Club Night:	2 <sup>nd</sup> Wed. of the month 7:30 pm – 9 pm

**NOTE: Only members working in SIG groups on designated days and times  
Are allowed to use the workshop at these times.**

If not delivered, please return to:  
Waverley Woodworkers Inc.  
2 Windsor Ave  
Mount Waverley, Vic 3150

