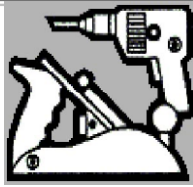


Waverley Woodworkers Inc.
Newsletter
February 2011
Volume 19 Issue 1



Supported by



Clubrooms: 2 Windsor Ave, Mount Waverley, 3149
Telephone: 9807 9648
Website: www.waverleywoodworkers.org.au

Office Bearers

President Tom Phillips 9802 7821
Vice President Ray Ffrench 9889 1155
Secretary Tony McLachlan 9840 7716
Treasurer Phillip Dunstan 9808 7510
Auditor Ian Trivett

Committee

Wolfgang Becker 9560 9278
Trevor Brooks 9569 5642
Kevin Shannon 9560 2492
Laurie Stuart 9807 9793
Roberto van der Hock 9551 6242

Others

Newsletter Editor Jenni Parker 9568 5179
Public officer Laurie Stuart 9807 9793
Council of woodwork clubs delegate George Perry

PRESIDENT'S REPORT FEBRUARY 2011

HAPPY NEW YEAR

The heartiest of wishes for a prosperous 2011 to each member and family and for our Club generally.

PREMISES

Good news indeed.

Via the heartening support of Councillor Tom Morrissey, land has been offered into our care at the northern edge of Gardiners Reserve, Evans Street (south), off Highbury Road, Burwood near to Warrigal Road. Coupled with this is the most generous offer of funding support by Rotary.

Most incumbent on Waverley Woodworkers Inc. is that we, as a club, are unanimous in our take up of such a magnanimous offer. Longer term members may recall the upset that caused the previous support offer to fall through. Any dissension amongst us will place current proceedings in jeopardy. You have each been provided with my letter of 21st of December 2010 inviting response and as well an exercise book was placed near the sign in book for comment. I am pleased to say there has been no negative comment raised.

Generally, matters got under way early January with a tight time frame for submission of our draft "dream" Business Plan which has now gone forward; copy of same is available in our clubrooms for members' perusal. The foregoing action has been generated by our project team with input by our committee and other key members.

Our project team comprises;

- Project Manager-Warren Digby,
- Secretary-Tony McLachlan,
- Ray Ffrench-Vice President, and,
- Self as President.

As stated above we are dictated by a tight timeframe. Final submission for Monash Council's March meeting is the objective.

We have submitted our Dream, or rather High Level Requirements document. We expect to be asked to flesh this out to create a Building Specification. At that stage we will hold a "members' meeting so that all who are interested have the important chance to contribute to our future.

Meantime the exercise book awaits any suggestions you may care to raise.

I appeal to each of you for teamwork and constructive support in this excellent one time opportunity to establish a permanent home for ourselves.

CLUB NIGHT MEETING

7.30 pm. Wednesday 9th of February 2011

Our member Bob Johnson will be making a presentation and demonstration of his dovetailing "Leigh Jig" with coupled commentary on ISOLOC & FINGER JOINT templates.

CLUB EVENTS

“Australia Day in Monash”

Open day in our clubrooms - 26th January, 2011.

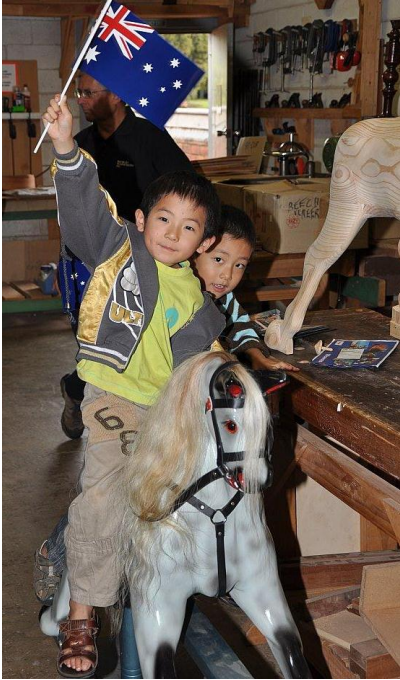
It was a good day to celebrate our national day.

We had around 60 members of the public call in. Whilst below last years' number, feedback is that we fared well compared to some other clubs participating in this Monash Council celebration day.

Some thirty plus members participated as hosts on the day. My thanks go to those hearty wood-turners for their skill demonstrations on the day.

Special mention goes firstly to Myrna Perry and Mary Mosca for “manning” the tea and coffee plus cake and biscuits stand, and secondly to our latent chef Cam Davies for operating the sausage sizzle. Particular thanks go to Cam's butcher “Len the Butcher” 110 Wattletree Road, Malvern for his kind donation of sausages.

Sale items raised \$166 on the day. Thanks to all who contributed to a successful day.



NEW MEMBERS

We welcome new members David Hobby, Mike Norwood and Peter Vermaas.

MONASH COMMUNITY RAFFLE

(A project of the eight Rotary Clubs in the City of Monash)

This is a once a year major raffle within the City of Monash.

We have received initial advice of this year's raffle which gets under way next month culminating in a June draw. For each \$2.00 ticket we sell we will receive \$1.54 of proceeds. Last year's raffle distributed \$78,705 to 90 organisations who participated. This is great opportunity to generate funds for our club and at the same time reciprocate to Rotary for their generous offer in backing our premises project.

ARE YOU THE MEMBER(S) to be our raffle coordinator(s). Get in early to offer your support.

VALE

I regret to announce the passing of Barbara Gay who was actively involved in club activities and on one occasion opened her house for our Christmas party.



DISCOUNTS

Are available from the following upon presentation of your current membership card

Australian Wood Panels	40-42 Winterton Rd Clayton	9543 5033
Baileys Toolbank.....	Unit 4 Rowen Crt Box Hill	98971911
Blackwoods	31 Fowler Rd Dandenong	9518 2222
The Delta Group Shed 2	577 Plummer St Port Melbourne	1300 887 558
Flatman's Timber & Hardware.....	High Street Rd Syndal.	*** 9802 9211 ****
A. Lewis & Co.....	302 Jasper Rd Ormond.	9578 6218
Malvern Paint & Timber Finishes	1933 Malvern Rd East Malvern	9885 2883
Magnetic Abrasives, Now "AbrasiFlex"	14 Bastow Place Mulgrave	9562 1788
Mathews Timbers	125 Rooks Rd Vermont.	9874 1666
Moorabbin Timber	230 Wickham Rd Moorabbin.	9553 0155
Sachy's Industries	43 Browning Drive Glen Waverley.	9803 2370
Shiver me Timbers	217 Kororoit Creek Rd Williamstown.	9397 5993
Woodworking Warehouse	11 Citrus St Braeside.	9587 3999

CLUB OPENING TIMES

Monday

9.00 am – 12 noon Public holidays only. Often open for general woodwork – need to check for this.
 7.30 pm – 9.00 pm Turning Group – members interested in turning meet to talk about techniques and show the latest projects. Any member is welcome.

Tuesday

9.00 am – 12 noon General woodworking for all
 1.00 pm – 4.00 pm Toy making group. Those interested in making toys are welcome to come along at this time.

Wednesday

9.00 am – 12 noon General woodworking for all.
 1.00 pm – 4.00 pm This session caters for to those who need instructions on safe use of machines and help to get started on personal projects.

Thursday

9.00 am – 12 noon General woodworking for all.

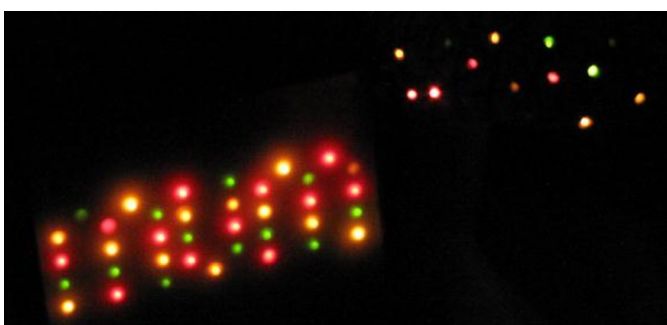
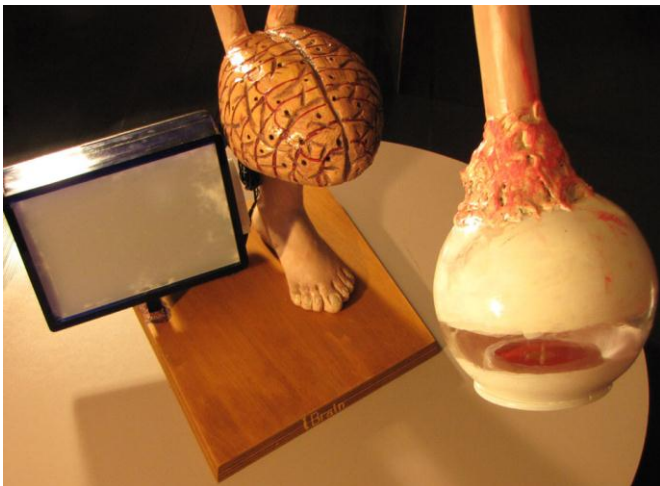
Friday

9.00 am - noon General woodworking. It may be possible to go longer if a key holder is staying on.

Saturday

9.00 am – 4.00 pm General woodworking from the first Saturday in March to the last Saturday in November. Summer months of December – February, hours are reduced to 9.00 – 1.00 pm unless a key holder is staying on.

Photos of Geoff Allen's latest university creation. The challenge was to make a model of Vision.



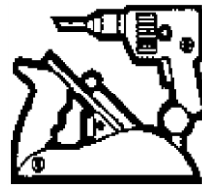
Waverley Woodworkers Inc

2 Windsor Avenue, Mount Waverley, VIC, 3149

Phone: 9807 9648

Website: www.waverleywoodworkers.org.au

ABN 458 367 522 81



Remember your monthly Club night – second Wednesday of the month at 7.30 pm



not delivered, please return to:
Waverley Woodworkers Inc.
2 Windsor Ave
Mount Waverley, Vic 3149

